



DSC CAST STEEL FLOAT & THERMOSTATIC STEAM TRAPS

No.FS2 ~ FSH12F SERIES

MOP 32K x 320°C



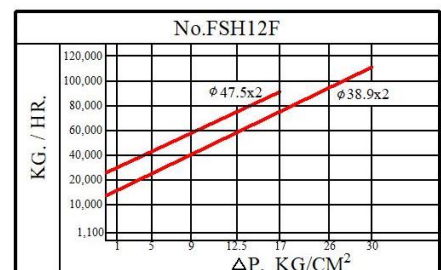
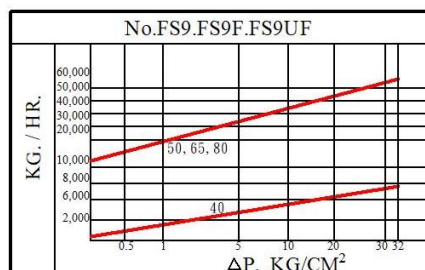
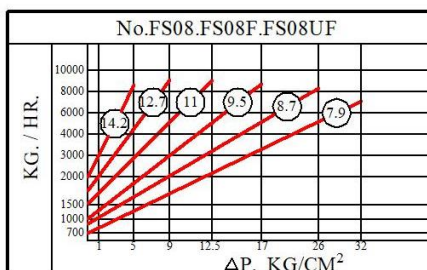
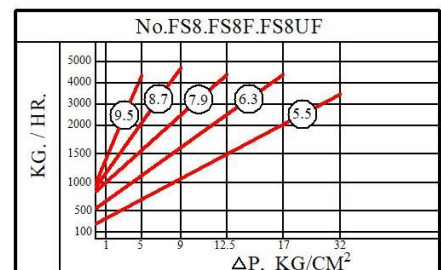
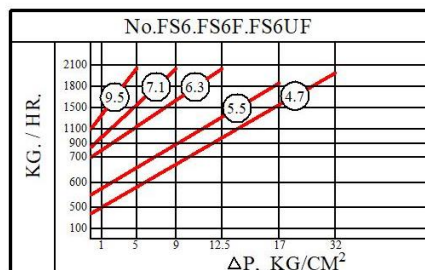
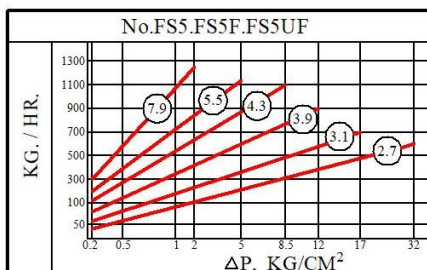
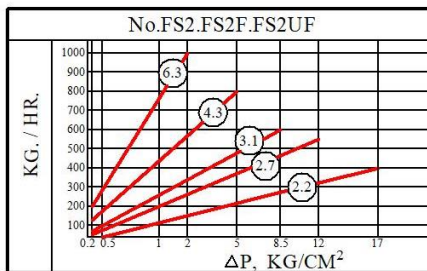
- DSC CAST STEEL FLOAT & THERMOSTATIC STEAM TRAPS
FLOAT UNIT FOR OPERATING PRESSURE 32KG/CM² X 320°C
- 1/2" 3/4" 1" WITH DIFFUSER CAN RESISTANCE WATER HUMMER.
- GOOD ENERGY CONSERVATION.
- GOOD RESISTANCE TO WEAR.
- GOOD CORROSION RESISTANCE.
- DO NOT VENT AIR AND CO₂ AT STEAM TEMPERATURE.
- EXCELLENT OPERATION AGAINST BACK PRESSURE.
- POOR RESISTANCE TO DAMAGE FROM FREEZING.
- FAIR ABILITY TO PURGE SYSTEM.
- IMMEDIATE RESPONSIVENESS TO SLUGS OF CONDENSATE.
- POOR ABILITY TO HANDLE DIRT.



CONSTRUCTION OF MATERIALS

CAP & BODY	CAST STEEL
SEAT & VALVE	CHROME STEEL HARDEND
MECHANISM	S.S.304
FLOAT	S.S.304
AIR VENT CAGE	S.S.304
DIFFUSER	S.S.304
GASKET	GRAPHITE
BOLTS & NUTS	CARBON STEEL

CONDENSATE DISCHARGE CAPACITY IN KG/ HR

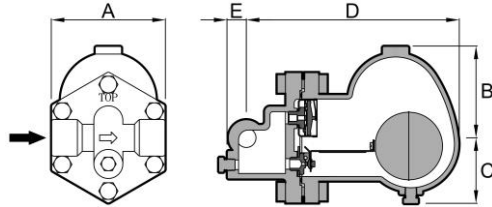




DSC CAST STEEL FLOAT & THERMOSTATIC STEAM TRAPS

No.FS2 ~ FSH12F SERIES

MOP 32K x 320°C

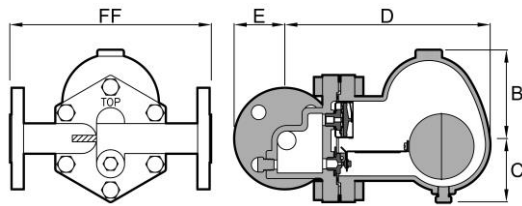


No.FS2~FS08

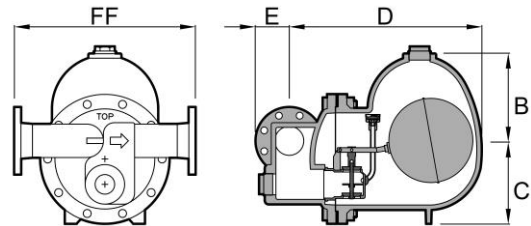
No.FS2 SERIES DIMENSIONS(MM). MOP(KG/CM²). WT(KG)

No.	CONN.SE*	A	B	C	D	E	MOP	WT
FS2	15.20.25	118	68	68	174	20	17	6.5
FS5	15.20.25	118	92	68	201	20	32	9
FS6	32.40	146	100	85	242	40	32	20
FS8	40.50	190	120	103	289	40	32	29
FS08	40.50	190	170	103	352	43	32	34

*NPT. BSPT. SW AVAILABLE.



No.FS2F~FS9F , No.FS2UF~FS9UF



No.FSH12F

No.FS2F SERIES

No.	CONN.FE*	FF	B	C	D	E	MOP	WT
FS2F	15.20.25	215	68	68	174	58	17	8
FS5F	15.20.25	215	92	68	201	70	32	11
FS6F	32.40	285	100	85	242	75	32	22
FS8F	40.50	310	120	103	289	83	32	31
FS08F	40.50	310	170	103	352	83	32	36
FS9F	40.50	230	137	109	367	83	32	34
	65.80	355	137	109	367	100	32	42
FSH12F	80.100	500/550	275	225	408	118	32	108

*ANSI FLANGE STANDARD. OTHER SPEC. CONSULT FACTORY.

No.FS2UF SERIES

No.	CONN.FE*	FF	B	C	D	E	MOP	WT.
FS2UF	15.20	150	68	68	220	53	17	7
	25	160	68	68	220	58	17	7.5
FS5U	15.20	150	92	68	247	53	32	8
	25	160	92	68	247	58	32	8.5
FS6UF	25/32	160/230	107	82	281	70	32	24
FS8UF	40.50	230	120	103	335	83	32	33
FS08UF	40.50	230	170	103	398	83	32	38
FS9UF	40,50	230	137	109	367	83	32	34

*DIN FLANGE STANDARD. OTHER SPEC. CONSULT FACTORY.